

Geospatial Exposures and Tools for Human Cohorts





Overview

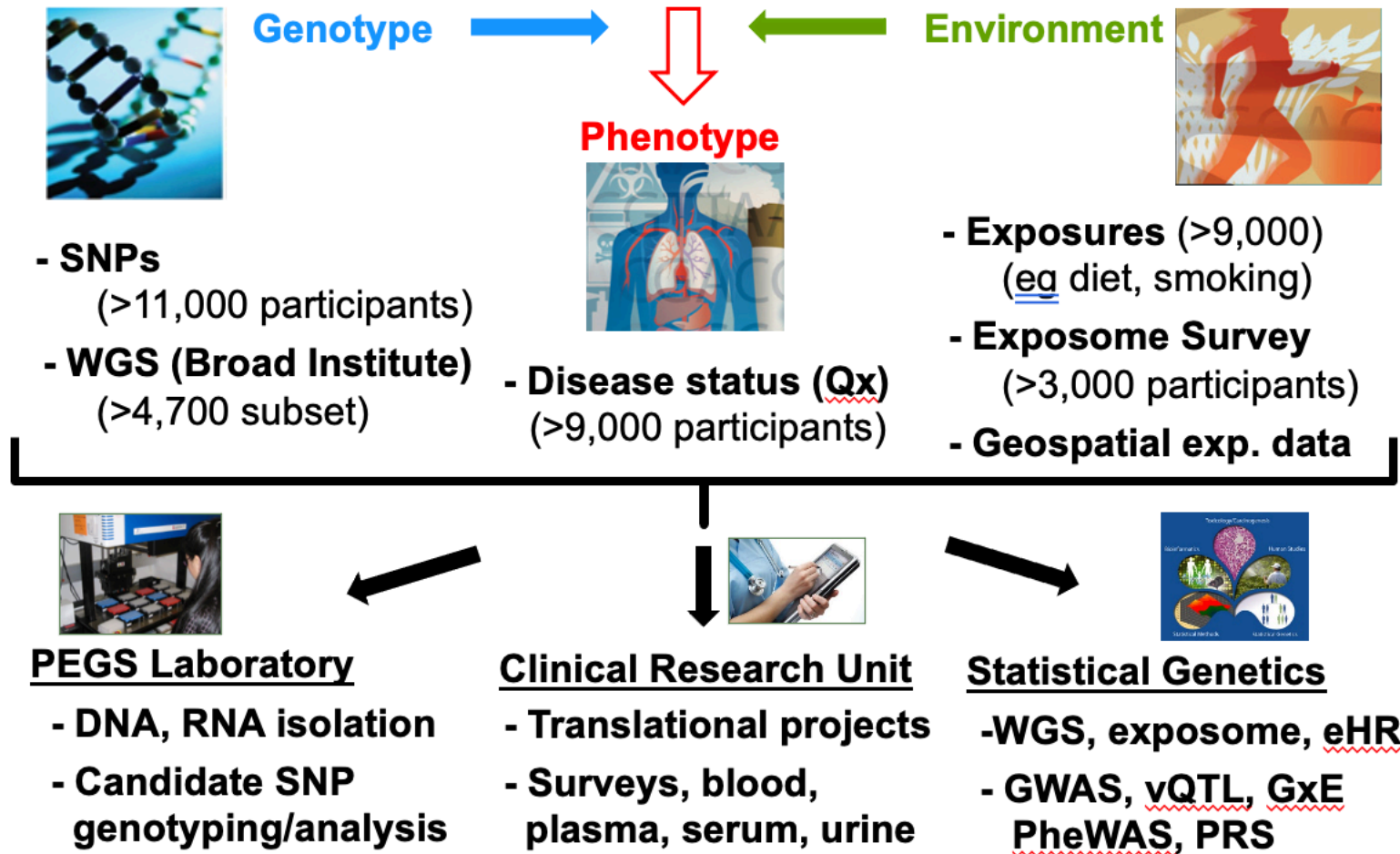
Complex traits are the results of genes, environment, and their interactions

Exposome data tries to collect the totality of a person's lifetime exposures (an admittedly impossible goal)

Ongoing NIEHS efforts: PEGS cohort as a motivating example



Personalized Environment and Genes Study



Health and Environment Surveys

Health and Exposure (H&E)

- Health, family history of disease, occupational exposures, socioeconomic status, and lifestyle data



Exposome

- Data on internal and external exposures, including medications, physical activity, stress, sleep, diet, chemical and environmental exposures at home and work

Core medical history

- Provides medical history data on diseases and medical conditions, smoking, alcohol, sleep, and surgeries

Exposome Survey

Part A: 'External Exposome'

approximately 200 questions

- Characteristics of current and past homes
- Workplace characteristics
- Chemical and metal exposures at work
- Hobby exposures
- Ultraviolet light exposures



Part B: 'Internal Exposome'

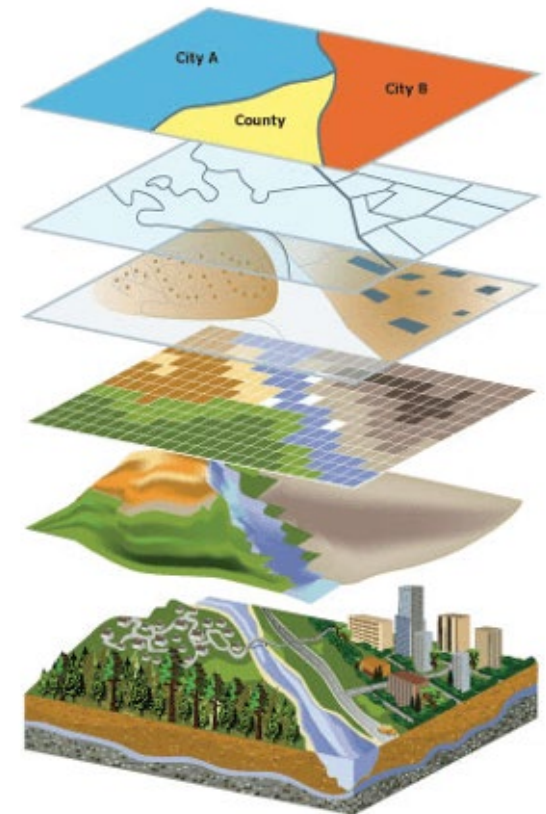
approximately 240 questions

- Medications
- Vitamins, minerals, dietary supplements
- Chemotherapy/radiation therapy
- Physical activity
- Stress
- Infection
- Sleep
- Dietary behavior
- Dietary intake
- Siblings/twins/birth order
- Genetic history

GIS Exposure Estimates

Growing Number of Data Layers

- Airports
- CAFOs
- Cellular towers
- Drinking water
- Dry cleaners
- Hazardous waste
- Highways
- Nuclear sites
- Wastewater
- Population info
- Power lines
- PR landfills
- Railroads
- Spills
- Sanitary landfills
- Superfund sites
- Toxic release sites,
- Etc.





Immune Mediated Diseases

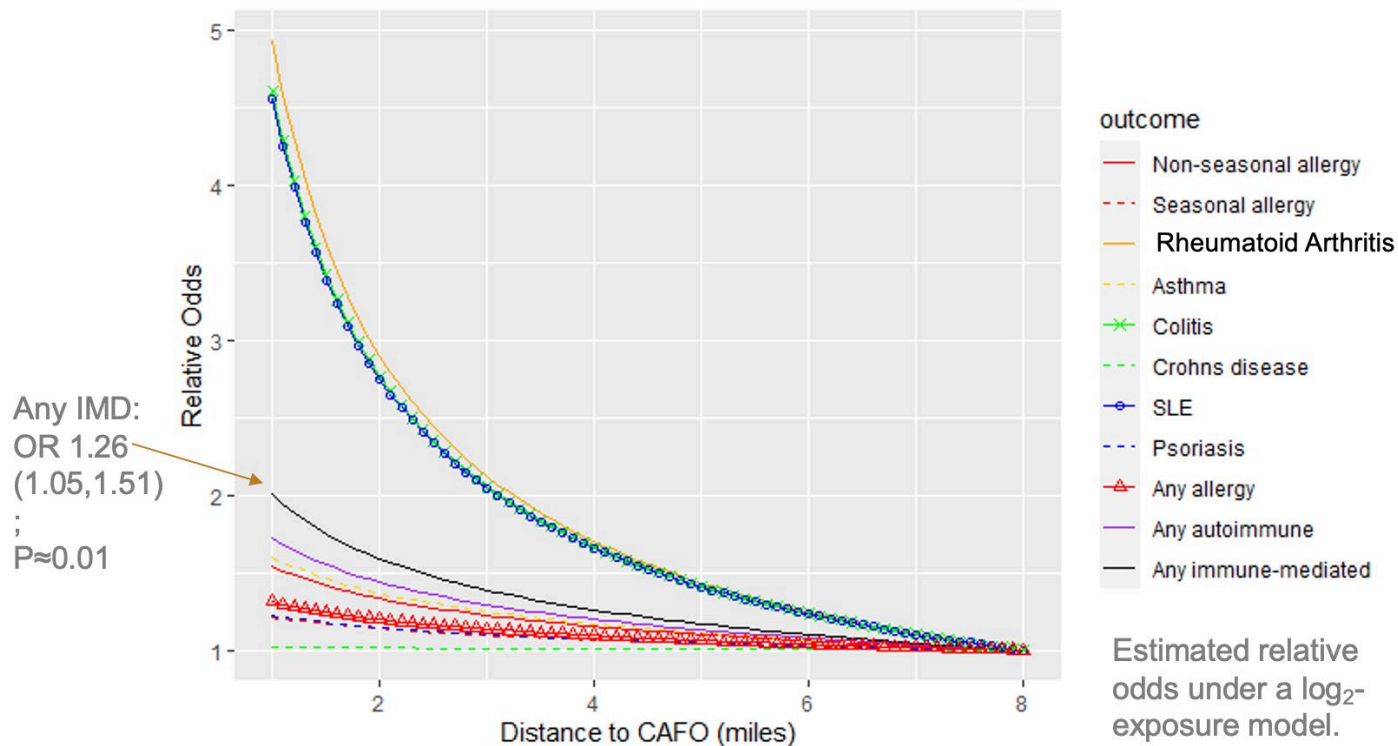
We hypothesize that proximity to swine CAFOs and IMD risk SNPs are associated with increased occurrence of immune-mediated diseases (IMD).

For array of IMD outcomes and mechanistic outcome groups we assessed:

1. The association between CAFO proximity and IMD
2. The association between IMD SNPs and IMD
3. Gene-environment interaction in IMD (GxE)¹

¹Interaction modeled according to Aliev et al (2014)

Association between CAFO Proximity and IMD



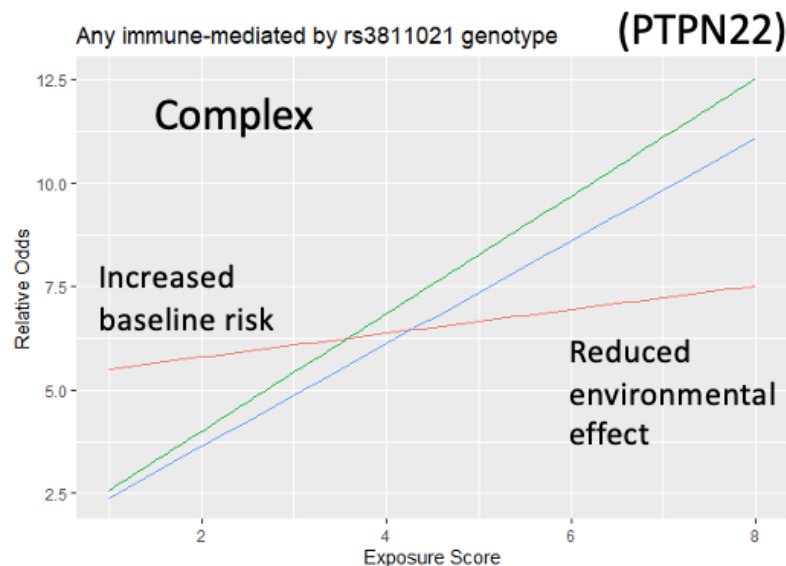
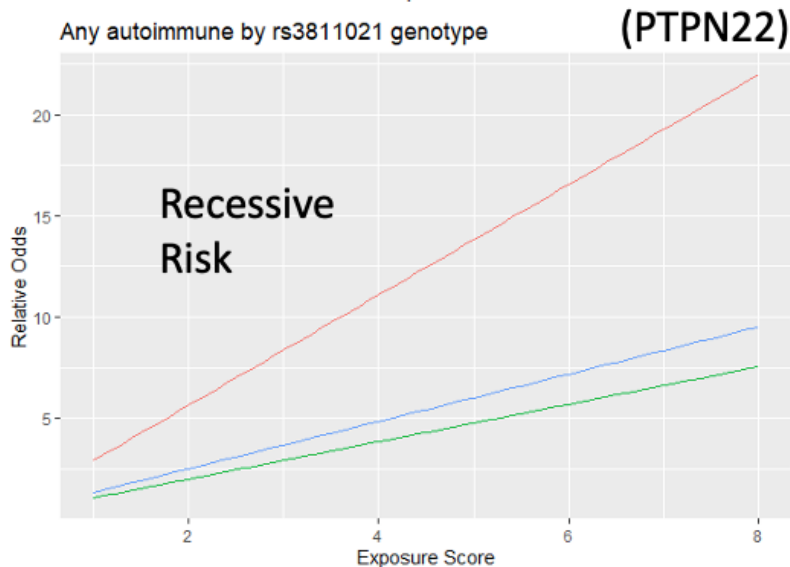
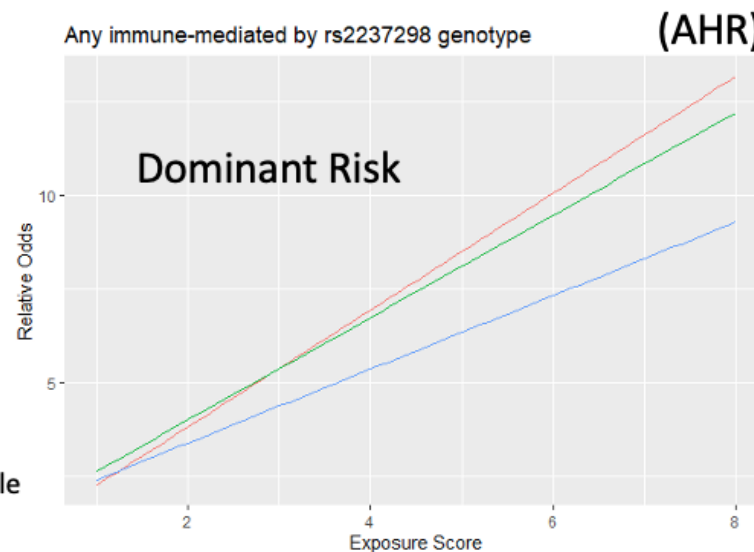
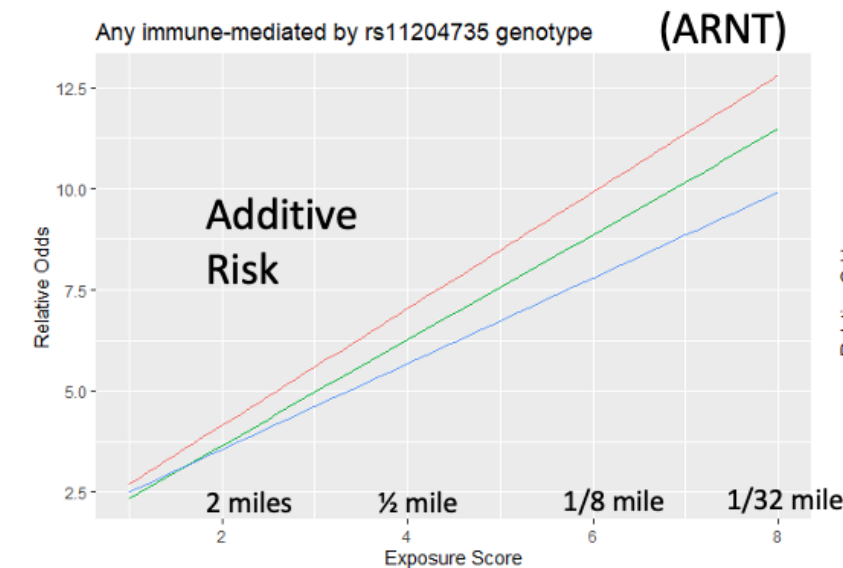
- Proximity to CAFOs was consistently associated with increased risk across IMD phenotypes.
- Significant associations were observed with rheumatoid arthritis, colitis, and any IMD (c=269).

Genetic associations with IMD

- Test for associations between SNPs previously associated with an IMD
 - AHRR, ARNT, PTPN22 and RSBN1
- rs2066853 (AHR) significantly associated with decreased odds of IMD, any allergy, and seasonal allergy
- Minor alleles increase disease, consistent across multiple IMD phenotypes
 - Suggests common mechanisms

Evidence for GXE Interactions

$$ES = -\log_2(d)+3$$



Ongoing Analysis

Many projects to understand the etiology of disease, and find gene-environment interactions

- Questionnaire based Exposome-wide Associations Studies
- Polygenic risk score development and GXE
- Methods development for prioritizing SNPs for GXE analysis
 - Genelist.niehs.nih.gov
- Genome-wide association analysis
- Association of geospatial exposures with diseases
- Linkage to health records from Duke and UNC Chapel Hill

Potential Sources of Exposome Data

Biomarker measurements in biospecimens

- Blood
- Urine
- Plasma
- Saliva
- Feces
- Placenta
- Umbilical cord blood
- Breast milk
- Hair, nails



Potential Sources of Exposome Data

Questionnaire data

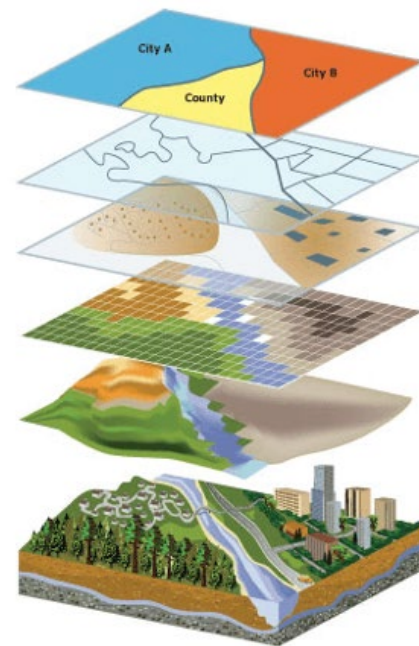
- Residential exposures
- Occupational exposures
- Socioeconomic status
- Educational
- Diet
- Lifestyle
- Medications



Potential Sources of Exposome Data

Geospatial Exposures – linked to addresses

- Residential address
- Address history
- Occupational address(es)
- Childhood address(es)



Potential Sources of Exposome Data

Data resources with exposure models

Residential address

- Address history
- Occupational address(es)
- Childhood address(es)

Wearables and smart phones





Numerous exposure models and databases

- Weather and atmosphere
- Air pollution
- Groundwater contamination
- Distance to hazards
- Health disparities information
- Built environment





Challenges in data “munging”

- Different geographic extents
- Different data sources
- Different spatial resolutions
- Different temporal resolutions
- Not consistently structured





Challenges in data “munging”

- Different geographic extents
- Different data sources
- Different spatial resolutions
- Different temporal resolutions
- Not consistently structured

Data efforts at NIEHS:
building software
resources to empower
assembling data
resources





Pollutant	Geographic Extent	Type	Data Source	Spatial Resolution	Temporal Resolution	Link to data documentation
Aerosol Index	Worldwide	Orbital spectroscopy	Aura	2 km	Daily	https://earthdata.nasa.gov/earth-observation-data/near-real-time/hazards-and-disasters/air-quality
UV Aerosol Index	Worldwide	Orbital spectroscopy	Suomi	2 km	Daily	https://earthdata.nasa.gov/earth-observation-data/near-real-time/hazards-and-disasters/air-quality
Aerosol Optical Depth	Worldwide	Orbital spectroscopy	MODIS (Aqua/Terra)	1 km	Daily	https://earthdata.nasa.gov/earth-observation-data/near-real-time/hazards-and-disasters/air-quality
Carbon Monoxide	Worldwide	Orbital spectroscopy	Aqua/Aura/Terra	2 km	Day/Night	https://earthdata.nasa.gov/earth-observation-data/near-real-time/hazards-and-disasters/air-quality
Fires	Worldwide	Orbital spectroscopy	Aqua/Tetta/Suomi	1 km	Daily	https://earthdata.nasa.gov/earth-observation-data/near-real-time/hazards-and-disasters/air-quality
Nitrous Oxide	Worldwide	Orbital spectroscopy	Aura	5 km	Day/Night	https://earthdata.nasa.gov/earth-observation-data/near-real-time/hazards-and-disasters/air-quality
Ozone	Worldwide	Orbital spectroscopy	Aura / Suomi	2 km	Day/Night	https://earthdata.nasa.gov/earth-observation-data/near-real-time/hazards-and-disasters/air-quality
Sulfur Dioxide	Worldwide	Orbital spectroscopy	Aqua/Aura/Suomi	2km	Day/Night	https://earthdata.nasa.gov/earth-observation-data/near-real-time/hazards-and-disasters/air-quality
Land use	Worldwide	Orbital spectroscopy	MODIS (Aqua/Terra)	500m	6-month	https://modis.gsfc.nasa.gov/data/dataproduct/mod12.php
Roadways	Worldwide	Survey/Administrative	Compilation	Long/Lat	~Decade	https://sedac.ciesin.columbia.edu/data/set/groads-global-roads-open-access-v1
Temperature	Worldwide	Meteorology	Weather station network	5 degree grid	Monthly	https://www.ncdc.noaa.gov/data-access/marineocean-data/noaa-global-surface-temperature-noaaglobaltemp
Sulfur Dioxide	United States	Point emissions estimates	National Emissions Inventory	Long/Lat	3 Years	https://www.epa.gov/sites/production/files/2020-04/documents/nei2017_tsd_full_30apr2020.pdf
Volatile organic compounds	United States	Point emissions estimates	National Emissions Inventory	Long/Lat	3 Years	https://www.epa.gov/sites/production/files/2020-04/documents/nei2017_tsd_full_30apr2020.pdf
Nitrogen oxides	United States	Point emissions estimates	National Emissions Inventory	Long/Lat	3 Years	https://www.epa.gov/sites/production/files/2020-04/documents/nei2017_tsd_full_30apr2020.pdf
Carbon dioxide	United States	Point emissions estimates	National Emissions Inventory	Long/Lat	3 Years	https://www.epa.gov/sites/production/files/2020-04/documents/nei2017_tsd_full_30apr2020.pdf
Lead	United States	Point emissions estimates	National Emissions Inventory	Long/Lat	3 Years	https://www.epa.gov/sites/production/files/2020-04/documents/nei2017_tsd_full_30apr2020.pdf
PM _{2.5}	United States	Point emissions estimates	National Emissions Inventory	Long/Lat	3 Years	https://www.epa.gov/sites/production/files/2020-04/documents/nei2017_tsd_full_30apr2020.pdf
PM ₁₀	United States	Point emissions estimates	National Emissions Inventory	Long/Lat	3 Years	https://www.epa.gov/sites/production/files/2020-04/documents/nei2017_tsd_full_30apr2020.pdf
Ammonia	United States	Point emissions estimates	National Emissions Inventory	Long/Lat	3 Years	https://www.epa.gov/sites/production/files/2020-04/documents/nei2017_tsd_full_30apr2020.pdf
Carcinogens	United States	Point emissions estimates	Toxics Release Inventory	Long/Lat	Yearly	https://www.epa.gov/toxics-release-inventory-tri-program/tri-listed-chemicals
Acute respiratory toxicants	United States	Point emissions estimates	Toxics Release Inventory	Long/Lat	Yearly	https://www.epa.gov/toxics-release-inventory-tri-program/tri-listed-chemicals
Persistent organic pollutants	United States	Point emissions estimates	Toxics Release Inventory	Long/Lat	Yearly	https://www.epa.gov/toxics-release-inventory-tri-program/tri-listed-chemicals
Criteria air pollutants	United States	Fused Emissions Model	Synthesis of multiple datasets	Census Tract / BG	Yearly	https://www.caces.us/data
PM _{2.5}	United States	Downscaler model	EPA Air Quality System	Metro area	Daily	https://healthdata.gov/dataset/daily-census-tract-level-pm25-concentrations-2011-2014
PM ₁₀	United States	Air monitor data	EPA Air Quality System	Metro area	Daily	https://www.epa.gov/aqs
Pesticides	United States	Survey/Land Use	USGS	County	Yearly	https://water.usgs.gov/nawqa/pnsp/usage/maps/
Roadway Density	United States	Survey/Land Use	USDOT	Census Block	~Decade	https://www.transportation.gov/mission/health/proximity-major-roadways#aboutthedata
Race/ethnicity	United States	Population survey	American Community Survey	Census Tract or ZIP	Yearly (rolling sample)	https://www.census.gov/programs-surveys/acs
Age/Sex	United States	Population survey	American Community Survey	Census Tract or ZIP	Yearly (rolling sample)	https://www.census.gov/programs-surveys/acs
Education/Income/Employment	United States	Population survey	American Community Survey	Census Tract or ZIP	Yearly (rolling sample)	https://www.census.gov/programs-surveys/acs
Poverty/public assistance	United States	Population survey	American Community Survey	Census Tract or ZIP	Yearly (rolling sample)	https://www.census.gov/programs-surveys/acs
Housing Indicators	United States	Population survey	American Community Survey	Census Tract or ZIP	Yearly (rolling sample)	https://www.census.gov/programs-surveys/acs
Social Vulnerability Index	United States	Derived Rank Measure	Derived from ACS Data	Census Tract	2 Years	https://svi.cdc.gov/data-and-tools/download.html
Quality of care	United States	Process indicator	Medicare/Medicaid Data	County	Yearly	https://www.cms.gov/Medicare/Quality-Initiatives-Patient-Assessment-Instruments/QualityMeasures
Airports	United States	Point emissions sources	FAA	Long/lat	~Decade	https://catalog.data.gov/dataset/airports
Cellular Broadcast Towers	United States	Point emissions sources	FCC	Long/lat	~Decade	https://hifid-geoplatform.opendata.arcgis.com/datasets/0835ba2ed38f494196c14af8407454fb_0
Hazardous waste disposal sites	United States	Point emissions sources	EPA	Long/lat	~Decade	https://www.epa.gov/enviro/envirofacts-data-service-api
Nuclear	United States	Point emissions sources	EIA	Long/lat	~Decade	https://www.eia.gov/maps/layer_info-m.php
Power lines	United States	Point emissions sources	NGA	Long/lat	~Decade	https://hifid-geoplatform.opendata.arcgis.com/datasets/electric-power-transmission-lines
Railroads	United States	Point emissions sources	USDOT	Long/lat	~Decade	https://railroads.dot.gov/maps-and-data/maps-geographic-information-system/maps-geographic-information-system
Subtitle D landfills	United States	Point emissions sources	NGA	Long/lat	~Decade	https://hifid-geoplatform.opendata.arcgis.com/datasets/solid-waste-landfill-facilities
Superfund sites	United States	Point emissions sources	EPA	Long/lat	~Decade	https://catalog.data.gov/dataset/superfund-sites1e8f4
Wastewater treatment plants	United States	Point emissions sources	EPA	Long/lat	~Decade	https://hifid-geoplatform.opendata.arcgis.com/datasets/4b9bac25263047c19e617d7bd7b30701_0
Animal Feeding Operations	North Carolina	Point emissions sources	NCDEQ	Long/lat	Yearly	https://deq.nc.gov/about/divisions/water-resources/water-quality-regional-operations/afo
Dry cleaning solvent	North Carolina	Point emissions sources	NCDEQ	Long/lat	~Decade	https://deq.nc.gov/about/divisions/waste-management/dry-cleaning-solvent-cleanup-act-program
Pre-regulatory landfills	North Carolina	Point emissions sources	NCDEQ	Long/lat	~Decade	https://deq.nc.gov/about/divisions/waste-management/superfund-section/pre-regulatory-landfill-program
Hazardous waste spills	North Carolina	Point emissions sources	NCDEQ	Long/lat	~Decade	





What types of exposure would be the most relevant?

- Lifestyle
- Built environment
- Weather/atmosphere
- Stress
- Toxic or chemical exposures
- Diet and medications
- Social determinants of health
- Others?



NIEHS Acknowledgments

- PEGS Leadership
 - Janet Hall (co-PI)
 - David Fargo
 - Charles Schmitt
- GIS Modeling
 - Kyle Messier
 - Melissa Lowe
 - Kristin Eccles
- CAFOs Study
 - Fred Miller
 - Nat McNell
 - Shepherd Sherman
- Statistical Genetics
 - Farida Akhtari
 - John House
 - Eunice Lee
 - Xiaron Tong
 - Dillon Lloyd
 - Jasmine Mack
- Bioinformatics
 - Adam Burkholder
 - Jianying Li
- Data Scholar
 - Lara Clark
- Common Disease Working Group
 - Kelly Chandler
 - Kim McAllister
 - Aubrey Miller
 - Alex Merrick
 - Alison Harrill
 - David Balshaw
 - Yuxia Cui
 - Michelle Bennett
 - Cindy Lawler



National Institute of Environmental Health Sciences
Your Environment. Your Health.

Questions?

alison.motsinger-reif@nih.gov



National Institute of
Environmental Health Sciences